

FX Supervisory Controller Family Software Products Release 14.x Installation Instructions

FX Supervisory Controller Family

Code No. LIT-12012253
Issued January 2017

Refer to the [QuickLIT website](#) for the most up-to-date version of this document.

- Introduction2**
- Summary of Changes.....2**
- Product Descriptions2**
- Host Computer Minimum Requirements.....3**
- Supported Operating Systems and Databases.....4**
- Installation.....5**
 - Installing the FX Supervisory Software5**
 - Licensing the FX Supervisory Software.....10**
 - Maintaining Multiple Installations of Niagara-Based Software.....11**
 - Before Installing a New Release11
 - During Installation of a New Release11

Introduction

Welcome to the FX Supervisory Controller Family software installation and configuration instructions. This document covers the initial software installation of the following products:

- FX Workbench
- FX Server

This document is meant for application engineers, system representatives, field installation and service technicians, and others performing control system installation.

This document does not cover the operation of Johnson Controls® customized versions of FX Workbench (FX Workbench Pro and FX Workbench) or NiagaraAX components. For more information on these versions and components, refer to the *FX Workbench 14.x User's Guide (LIT-12012256)* or the *Niagara User's Guide* located in **docs\docUser** folder of your FX Supervisory Software installation directory.

Note: The default installation directory for the FX Workbench User's Guide is **C:\JCI\FXWorkbench-#.#\jciStandards**, where [#.#] is replaced by the revision level of the software.

Note: The default installation directory for the Niagara User's Guide is **C:\JCI\FXWorkbench-#.#\docs\ docUser**, where [#.#] is replaced by the revision level of the software. However, you can specify a different installation directory during the installation process. Ensure you have the correct directory path when you access the user documentation.

Summary of Changes

The following information is new or revised:

- Updated all screens to reflect Release 14.2

Product Descriptions

The FX Supervisory Controller Software family includes several software product models, all of which are variations of the Niagara Framework software. The differences between the FX Supervisory Controller Family Software product models are primarily the file size of the installation image and the features enabled by the various licensing options. The installation images for all FX Supervisory Controller Family Software are provided on a single DVD (FX-DVD-COPY). Alternatively, you can download the installation images for FX Supervisory Controller Family Software from the ProFX User Community.

Table 1: FX Workbench Licensing Options

License Part Number	Description
FX-DVD-COPY	FX Supervisory Controller family software, delivered on DVD. Includes latest installation images for FX Server, FX Workbench, and FX Alarm Portal Client. Licenses not included—order licenses separately.
FX-SLDEMO-0	Engineering/demo license for FX Workbench client software. Enables all features needed to engineer and demonstrate FX Supervisory Controllers and FX Server stations. Intended for installing contractors. Requires annual support fee. Expires yearly.

At Release 14.x of FX Server, your initial purchase requires a maintenance for software. Maintenance can be purchased in 1, 3, or 5 year increments. During that time, you have access to any new software developed. If you let the maintenance lapse, and want it later, you must buy the past maintenance you missed plus the new maintenance. For more information, see the *FX Server Release 14.x Product Bulletin (LIT-12012251)* or the *FX Server Release 14.x Catalog Page (LIT-1901000)*

Host Computer Minimum Requirements

All FX Supervisory Software products are installed on a user-supplied host computer or server platform.

Table 2: Minimum Requirements for Hosting FX Supervisory Software

Processor	Intel® Xeon® CPU E5-2640, 64-bit (or better), compatible with dual and quad core processors
Operating System	See Table 3 .
Memory	4 GB or more, with 8 GB or more recommended for larger systems
Hard Drive	4 GB available, 10 GB or more recommended for FX Servers
Display	Video card and monitor capable of displaying 1024 x 768 pixel resolution or greater
Network Support	Ethernet adapter (10/100 MB with RJ-45 connector) or 1 GB network interface card (NIC) with TCP/IP support
Connectivity	Full-time high-speed Internet service provider (ISP) connection recommended for remote site access (for example, T1, ADSL or cable modem connections)

Supported Operating Systems and Databases

Table 3: Supported Operating Systems and Databases

Operating System	FX Supervisory Software Release 14.x (Niagara 4.x)
Windows XP Professional (SP3) (32-bit)	Y
Windows XP Professional (SP3) (64-bit)	N
Windows Vista Business/ Enterprise/Ultimate (SP2) (32-bit)	N
Windows Vista Business/ Enterprise/Ultimate (SP2) (64-bit)	N
Windows Server® 2003 Standard/Enterprise (SP2) (32-bit)	N
Windows Server 2003 Standard/Enterprise (SP2) (64-bit)	N
Windows Server 2003 R2 Standard/Enterprise (SP2) (32-bit)	N
Windows Server 2003 R2 Standard/Enterprise (SP2) (64-bit)	N
Windows Server 2008 Standard/Enterprise (SP2) (32-bit)	N
Windows Server 2008 Standard/Enterprise (SP2) (64-bit)	N
Windows Server 2008 R2 Standard/Enterprise (SP2) (64-bit)	N
Windows Server 2012 Standard/Enterprise (SP2) (64-bit)	Y
Windows Server 2012 R2 Standard/Enterprise (SP2) (64-bit)	Y
Windows 7 Professional/ Enterprise/Ultimate (32-bit)	Y
Windows 7 Professional/ Enterprise/Ultimate (32-bit) (XP mode)	N
Windows 7 Professional/ Enterprise/Ultimate (64-bit)	Y
Windows 7 Professional/ Enterprise/Ultimate (64-bit) (XP mode)	N
Windows 8 Professional/ Enterprise/Ultimate (32-bit)	Y
Windows 8 Professional/ Enterprise/Ultimate (64-bit)	Y
Windows 8.1 Professional/ Enterprise/Ultimate (64-bit)	Y
VMware® Server 2	N
VMware - ESXi 5.1.0	Y
Microsoft Virtual Server 2008	Y
Red Hat® Enterprise Linux® 7	Y
Relational Database Server	
MSDE 2000	N
Microsoft SQL Server® 2000	N
Microsoft SQL Server 2005/2008	Y
MySQL® Server 5.1.61	N
MySQL Server 5.6	Y
Oracle® 9i/10g	Y
DB2 8.1	N
Microsoft SQL Server 2012	Y

Installation

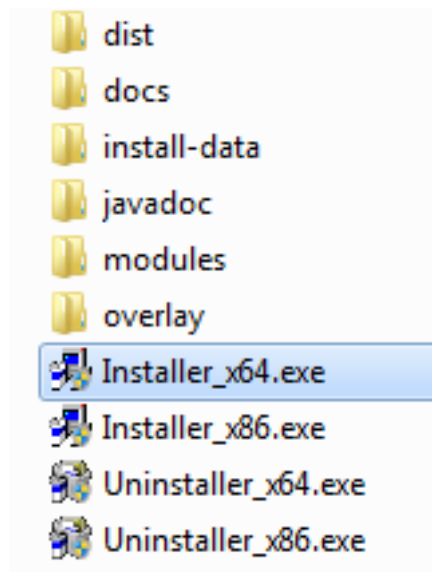
The FX Supervisory Software Installation DVD includes the installation files for all FX Supervisory Software products to be installed on an FX Server or FX Workbench engineering workstation.

Note: Keep all materials shipped with your FX Supervisory Software products in a safe and accessible place. Materials shipped with your FX Supervisory Software products are crucial if you need to repair or restore the original software image.

Installing the FX Supervisory Software

1. Close all applications on the host computer.
2. Insert the FX Supervisory Software Installation DVD into the computer's DVD drive (or unzip the FX Supervisory Software release file downloaded from the ProFX User Community).
3. Open Windows Explorer and navigate to the FX Supervisory Software Installation DVD.
4. Browse to the location of the software product you intend to install.

Figure 1: Choose Setup for 64-bit Host



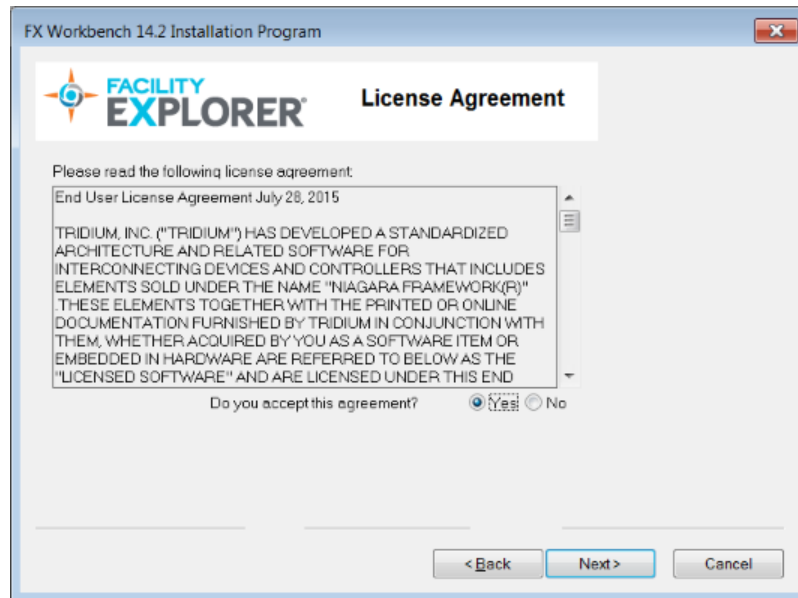
5. Double-click the appropriate installer for the operating system you are installing on. The FX Supervisory Software Installation window appears.

Figure 2: FX Supervisory Software Installation Window



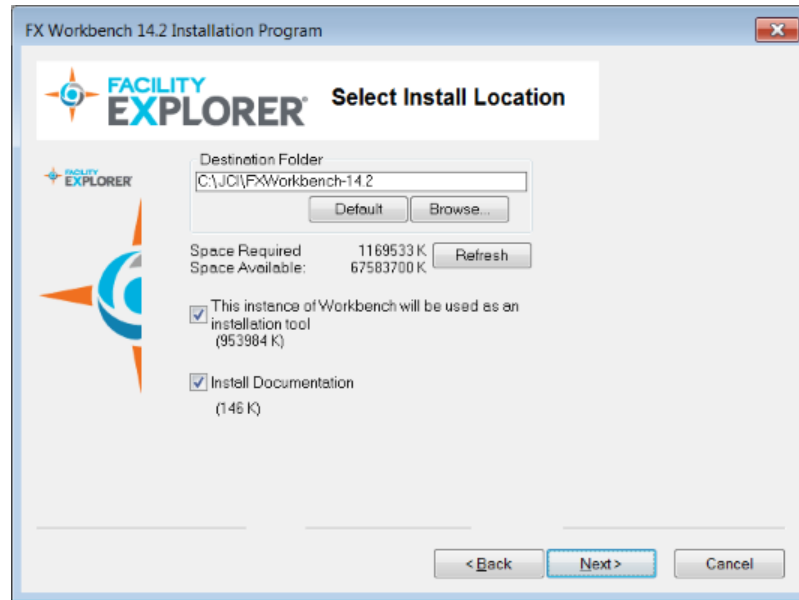
6. Click **Next** to begin installing the software. The License Agreement window appears.

Figure 3: License Agreement Window



7. Select **Yes** to accept the license agreement.
8. Click **Next**. The Select Install Location window appears.

Figure 4: Select Install Location Window



9. Specify the destination folder.

Note: By default, the destination folder is **C:\JCI\FXWorkbench-X.X (C:\JCI\FXServer-X.X** for FX Server installations). You may specify a different destination folder or drive for installation. However, we recommend that you use the default destination folder.

To specify a different destination folder or drive, click **Browse**. If you specify a different destination folder, click **Refresh** to update the Space Available data. The Space Available field displays the drive space available for the installation files.

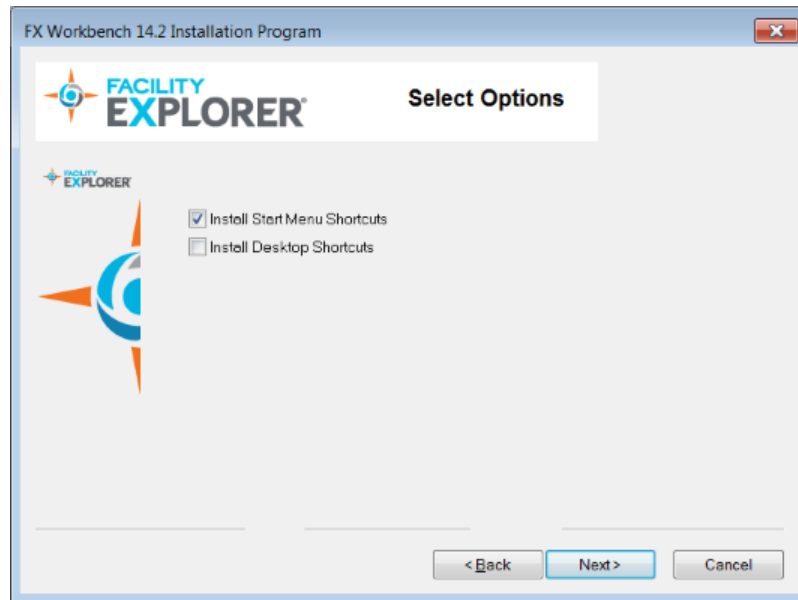
10. Select the **This instance of Workbench will be used as an installation tool** and **Install Documentation** check boxes.

11. Click **Next**.

12. If you specified a folder that does not exist, a warning dialog box appears.

Click **Yes** to create the folder and to continue with the installation process. The **Select Options** window appears.

Figure 5: Select Options Window



13. Keep the default options and click **Next**. The Installing window appears. When the FX Workbench installation is complete, the Finish Install window appears.

Figure 6: Installation Progress Bar

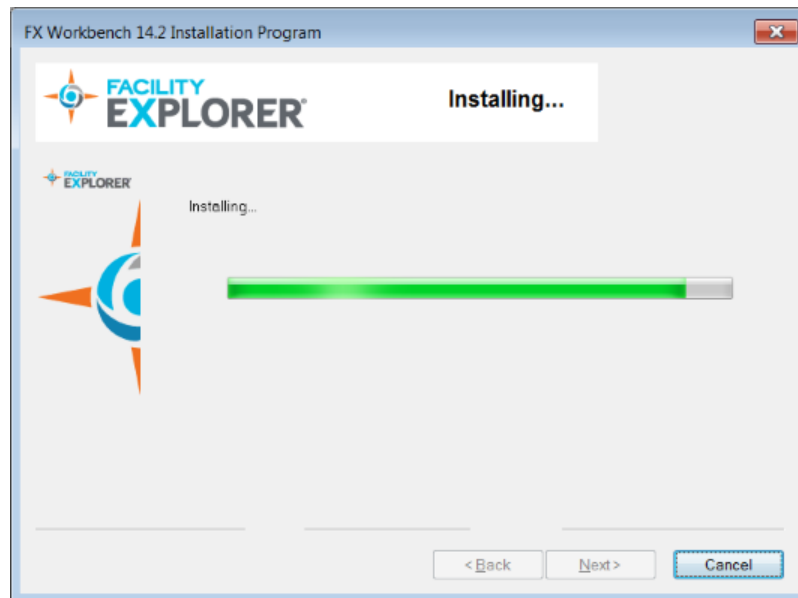
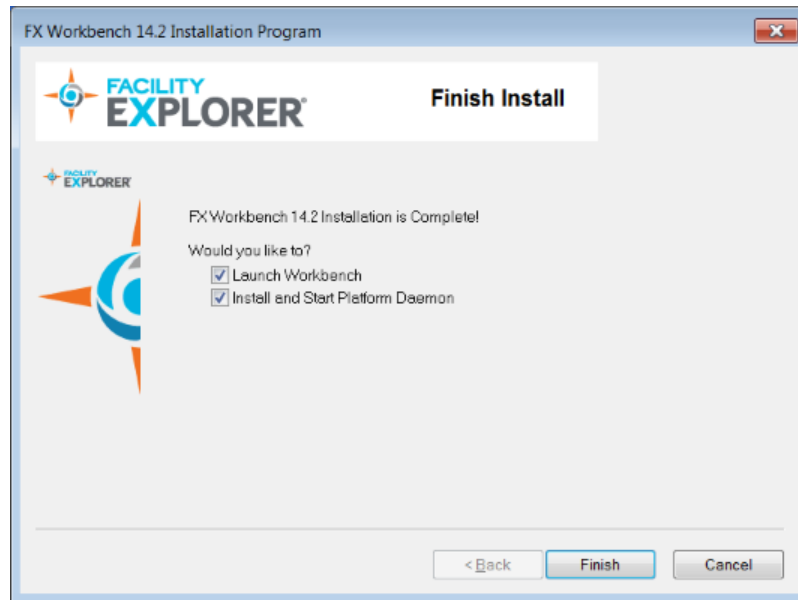


Figure 7: Finish Install Window



14. To launch FX Workbench upon clicking Finish, select the **Launch Workbench** check box.
15. To install and start the platform daemon, select the **Install and Start Platform Daemon** check box.
16. Click **Finish**.

When the installation is complete, the Niagara platform daemon installs and starts automatically. The Niagara platform daemon is required to support the operation of a station and acts as a server for the platform connections (from the computers running the FX Workbench client).

If a prior installation of FX Supervisory software exists on the same computer, a window prompts you to restart the platform daemon.

Figure 8: Platform Daemon Restart Window



17. Click **Continue**.
18. Restart the platform daemon from the Start Menu shortcut.

Licensing the FX Supervisory Software

Note: If you are installing an FX Supervisory Software license on a computer that already has a license for Niagara-based software, see [Maintaining Multiple Installation of Niagara Supervisory Software](#) before continuing.

FX Supervisory Software requires a valid license file for operation. Each license file is specific to the host computer. The Niagara software generates a unique host ID for each device. The host ID appears in the first line of the license file (a digitally signed text or .xml file).

A valid license is required for FX Supervisory Software to operate. Contact Software Manufacturing to order the appropriate license. The license is keyed to the host ID of the computer or server host. The host ID of the computer is obtained immediately after installing the FX Supervisory software. Provide this host ID to Software Manufacturing (software.manufacturing@jci.com) to obtain a keyed license.

This section describes the how to obtain a valid license for the FX Supervisory Software on your host computer.

When the FX Supervisory Software starts, a Request License dialog box appears.

Figure 9: Request a License Window



1. Select and copy all the text from the body of the Request License dialog box.
2. Paste the copied text into an email message.
3. Replace the information in the brackets of the copied text:
 - Sales Order Number: <sales order number>
 - Purchased From: <purchased from>
 - Sales Order Item Number: <sales order item number>
 - Your Name: <your name>
 - Your Email Address: <your email address>

Note: Ensure the host ID is included in the email message body.

4. Send your license request in an email message to Johnson Controls Software Manufacturing (software.manufacturing@jci.com).

Johnson Controls Software manufacturing processes and validates your license request. An email reply from the licensing server containing the license file and the instructions on installing the license file is sent to your email address.

Typically, to install the license file, you unzip the .zip file attached in the email reply and paste the contents of the unzipped .zip file into the license folder of your FXWorkbench-X.X software product installation directory.

Maintaining Multiple Installations of Niagara-Based Software

Multiple instances of Niagara-based software may be installed on a computer. Having multiple instances of the Niagara-based software installed is convenient when supporting customers who are at different release versions. This section provides recommendations for supporting multiple instances of the Niagara-based software.

Before Installing a New Release

When you install a new instance of the software, the properties of the desktop shortcut created during a prior installation is updated to the new instance directory. To retain the properties of a previously installed desktop shortcut, rename the shortcut before you start installing a new instance of the software.

For your convenience, create a desktop shortcut to run the Niagara daemon for each installation instance you wish to maintain. Example properties for FX Supervisory Software instance are:

- Target: C:\JCI\FXWorkbench-X.X\bin\plat.exe installdaemon
- Start in: C:\JCI\FXWorkbench-X.X\bin

During Installation of a New Release

Install the platform daemon for the release you are using. Run the daemon shortcut you created earlier, or at the command prompt, type **C:\JCI\FXWorkbench-X.X\bin\plat.exe installdaemon**.

The platform daemon must match the installation instance of the Niagara based software you want to run.



Building Technologies & Solutions
507 E. Michigan Street, Milwaukee, WI 53202

*Johnson Controls® is a registered trademark of Johnson Controls.
All other marks herein are the marks of their respective owners. © 2017 Johnson Controls*